



WOODBURY ESTATES

A PREMIER 55+ COMMUNITY IN SALEM, NEW HAMPSHIRE FEATURING
SINGLE FAMILY, DETACHED, MAINTENANCE FREE HOMES.
PRE-CONSTRUCTION PRICING FROM \$469,900!



Conveniently located off of Interstate 93, Exit 1 or 2
Use 60 Pleasant Street, Salem, NH for GPS location
Model home located at 10 Catalpa Road

Kathryn@dhbhomes.com / 603-327-7475
Aaron@dhbhomes.com / 603-235-1944
dhhomes.com





603-327-7475

Salem

NH



About Salem, NH

Why live in Salem, NH? Where do we begin?! First, the location is truly unbeatable – whether you're commuting to work in Massachusetts, going to dinner in the City, day-tripping to the beach or taking a vacation in the mountains, it is all within an hour (or less) drive. Salem is the next "it" town in Southern New Hampshire. Just take a look down Route 28 and see the new development, Tuscan Village, coming to life day by day. You will find shops, grocery stores, restaurants, movie theaters and more under construction. The local rail trail, playgrounds and parks provide a great environment for visiting grandkids or a daily walk. Woodbury Estates is conveniently located about a mile off of Exit 1 or 2, Interstate 93 – right on the New Hampshire/Massachusetts border. Town water/sewer are added benefits to this development. Come find out why Salem is the place to be!

Woodbury Estates – a 55+ Community

Woodbury Estates offers detached, maintenance-free living in a private 10-lot cul-de-sac setting. Set back off of Pleasant Street, offering small town charm coupled with ultra-convenience, creating a best of both worlds' location. Located within walking distance to Tuscan Village where shops, restaurants, groceries and more to come await! A variety of floor plans are offered featuring first floor master bedrooms, open concept living space with high ceilings, free-flowing kitchens, closets galore and more. All homes come standard with a two-car garage and a full walk-out basement for storage or future finishing. A deck or patio completes the back of each unit to enjoy those coveted summer nights grilling with family and friends. Come choose your lot, floor plan and your finishes to complete your brand-new home!



WOODBURY ESTATES



Conveniently located off of Interstate 93, Exit 1 or 2
Use 60 Pleasant Street, Salem, NH for GPS location
Model home located at 10 Catalpa Road

Kathryn@dhbhomes.com / 603-327-7475
Aaron@dhbhomes.com / 603-235-1944
dhbhomes.com   

603-327-7475



ABOUT THE BUILDER

For over 30+ years DHB Homes LLC has been developing, building, managing and marketing real estate developments throughout New Hampshire and Massachusetts.

DHB Homes LLC's developments include hundreds of single-family homes in many of New Hampshire's finest communities, multi-family housing units in Boston, MA, beachfront condominiums in Salisbury, MA, several commercial office parks in Londonderry, NH, high-end waterfront town homes on Lake Winnepesaukee and a four-season resort community on the shores of beautiful Newfound Lake in Bristol, NH. We are currently building communities in Londonderry, Pelham and Salem, NH in addition to our recent and extremely popular 55+ project, Granite Woods of Salem. We are also continuing to build our ever-expanding rental portfolio in Southern New Hampshire.

DHB Homes partners with the areas best suppliers and contractors who stand behind their craftsmanship. We have long-term loyal contractors who show up daily and work hard to deliver unmatched quality. Our project managers are seasoned in the construction business and familiar with every aspect from building permit to finish work. We stand behind our work from beginning to warranty end. With every new venture, DHB Homes LLC remains committed to delivering quality homes that meet and exceed customer expectations.



CONTACT US

DHB Homes LLC is conveniently located off of Interstate 93, Exit 4:
25 Buttrick Road, A1
Londonderry, NH 03053
Office: 603-965-0360
Fax: 603-965-0361

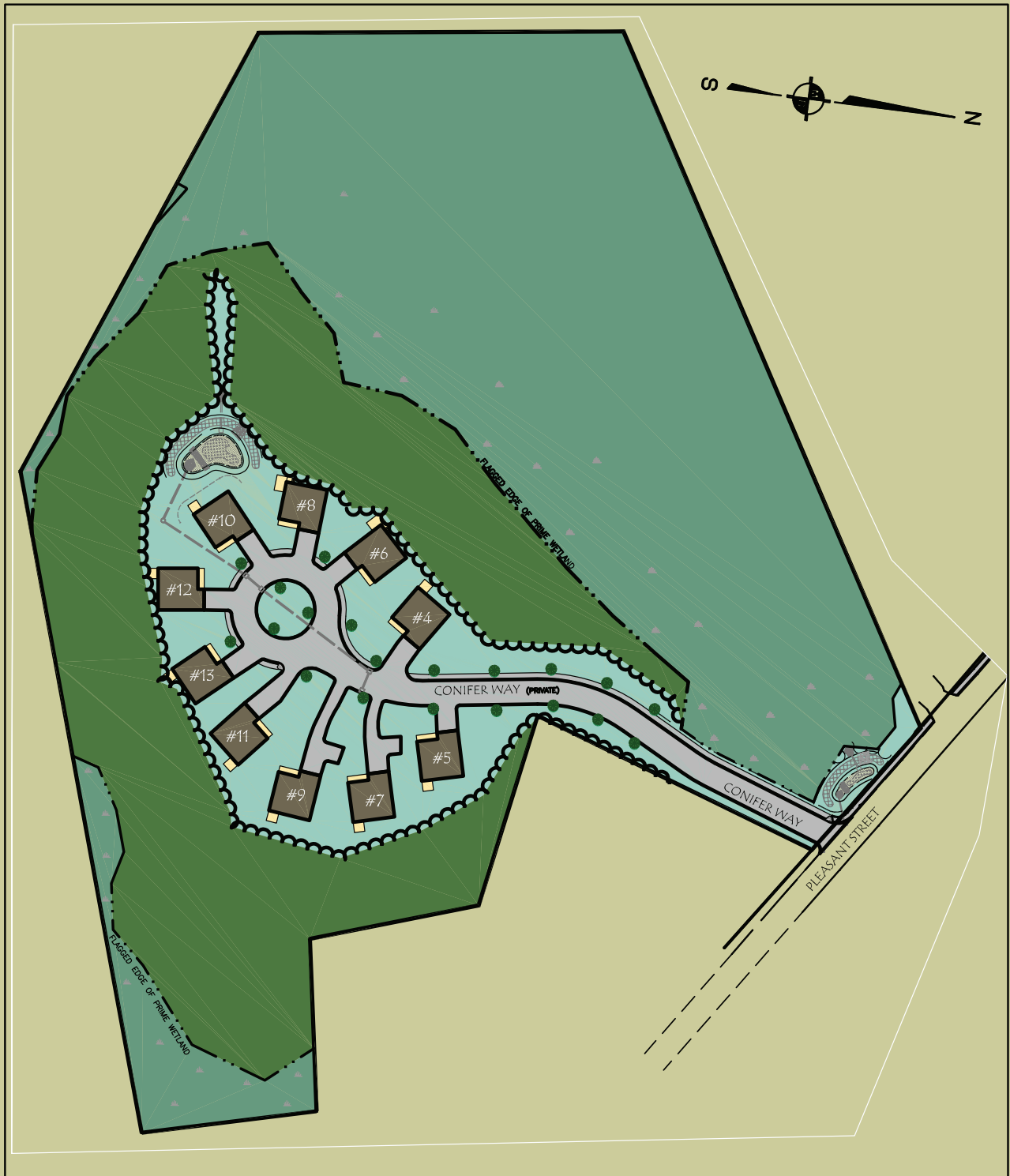


Conveniently located off of Interstate 93, Exit 1 or 2
Use 60 Pleasant Street, Salem, NH for GPS location
Model home located at 10 Catalpa Road

Kathryn@dhbhomes.com / 603-327-7475
Aaron@dhbhomes.com / 603-235-1944
dhhomes.com



SITE MAP



Conveniently located off of Interstate 93, Exit 1 or 2
Use 60 Pleasant Street, Salem, NH for GPS location
Model home located at 10 Catalpa Road

Kathryn@dhbhomes.com / 603-327-7475
Aaron@dhbhomes.com / 603-235-1944
dhhomes.com   

The Fisk

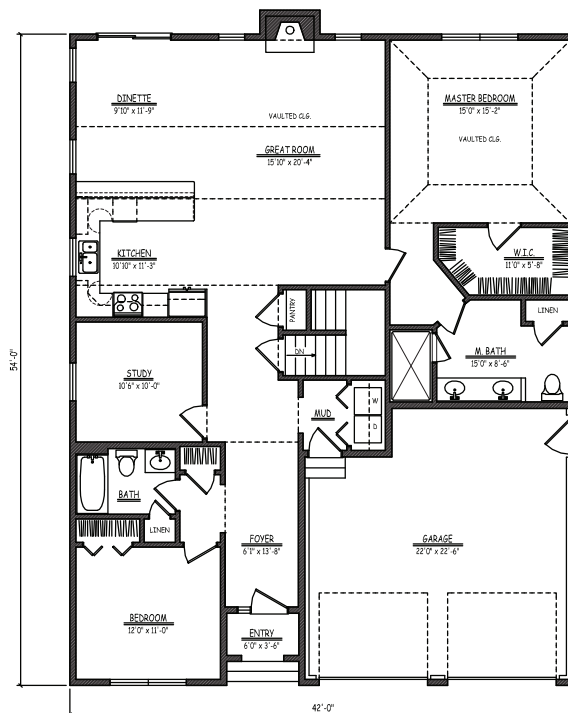
1,741 SF

Sure to be our most popular plan, the Fisk. A ranch style home that will fit the needs of all. One-level living with high ceilings and an open free-flowing layout with a large master suite, second bedroom, two full baths, study, full basement for storage and more! Two car attached garage. A four-season sunroom is an option that will add the finishing touch to this plan. Either a deck or a patio is included.

603-327-7475



FIRST FLOOR



Conveniently located off of Interstate 93, Exit 1 or 2
Use 60 Pleasant Street, Salem, NH for GPS location
Model home located at 10 Catalpa Road

Kathryn@dhbhomes.com / 603-327-7475
Aaron@dhbhomes.com / 603-235-1944
dhhomes.com





603-327-7475

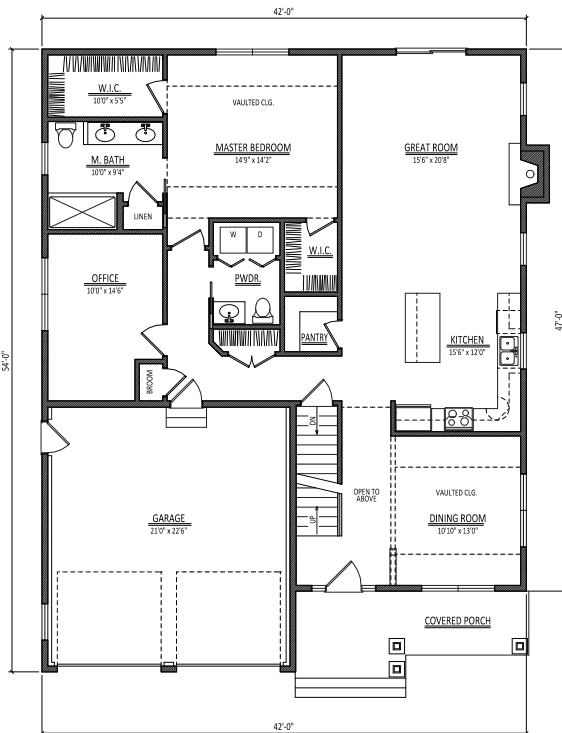
The Woodbury

2,316 SF

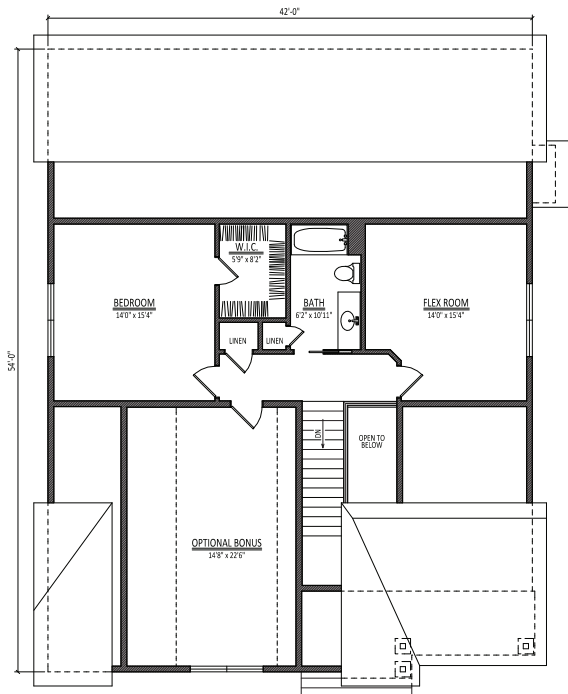


Front porch leads into open concept living area on the first floor. Living room and kitchen flow together with a large walk-in pantry directly off of the kitchen. First floor master bedroom with over-sized walk-in closet and en suite including tile shower and double sinks. A dining room and study/flex room also accompany the first floor. Upstairs is home to another bedroom with a walk-in closet and a flex room. Full basement and two car attached garage provide plentiful storage space.

FIRST FLOOR



SECOND FLOOR



Conveniently located off of Interstate 93, Exit 1 or 2
Use 60 Pleasant Street, Salem, NH for GPS location
Model home located at 10 Catalpa Road

Kathryn@dhbhomes.com / 603-327-7475
Aaron@dhbhomes.com / 603-235-1944
dhhomes.com   



NOTES

Lined area for taking notes.



Conveniently located off of Interstate 93, Exit 1 or 2
Use 60 Pleasant Street, Salem, NH for GPS location
Model home located at 10 Catalpa Road

Kathryn@dhbhomes.com / 603-327-7475
Aaron@dhbhomes.com / 603-235-1944
dhbhomes.com   