

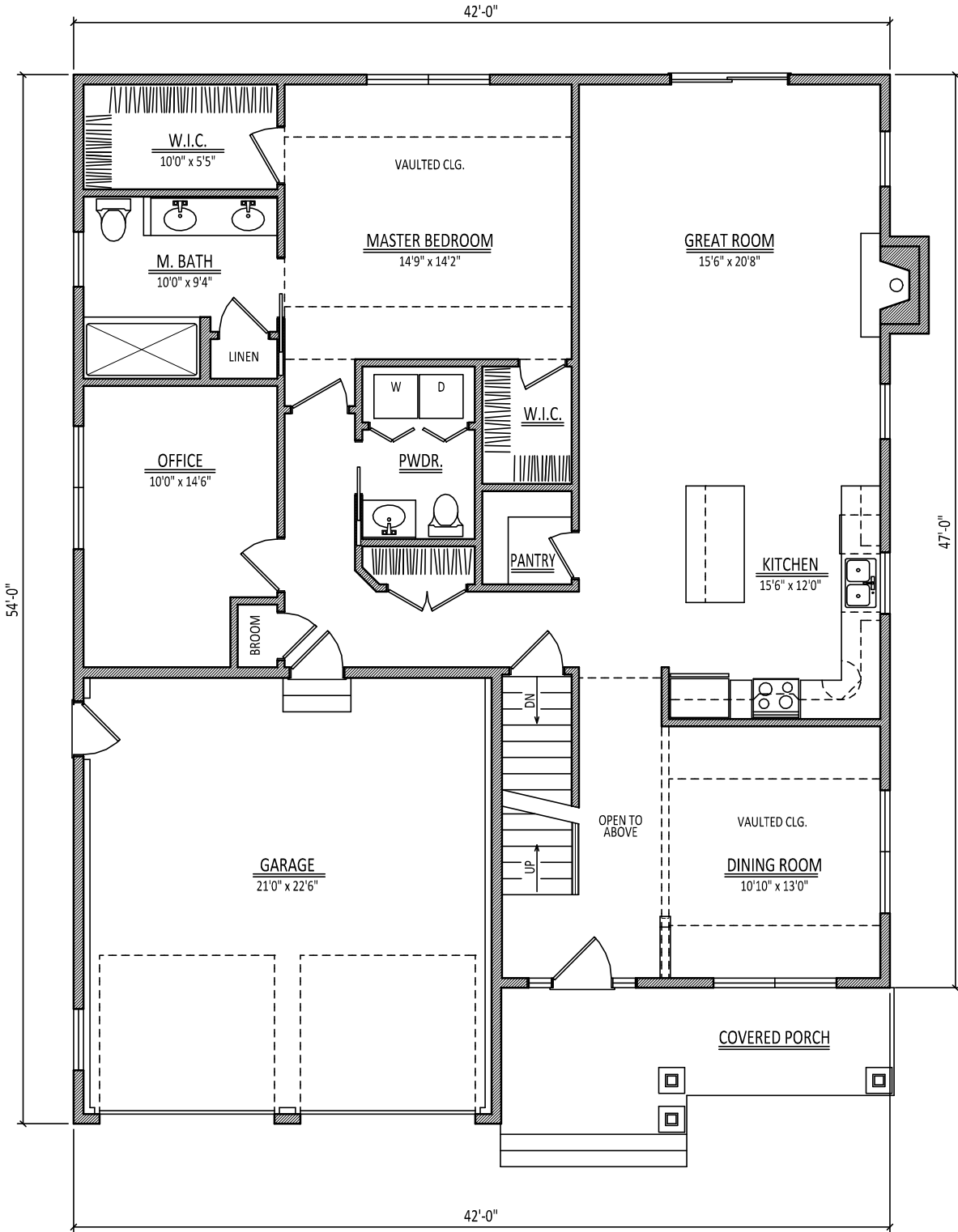
SQUARE FOOTAGE TABLE	
PLAN	SQ. FTG.
FIRST FLOOR	1,631
SECOND FLOOR	685
TOTAL:	2,316



FRONT ELEVATION

THE WOODBURY

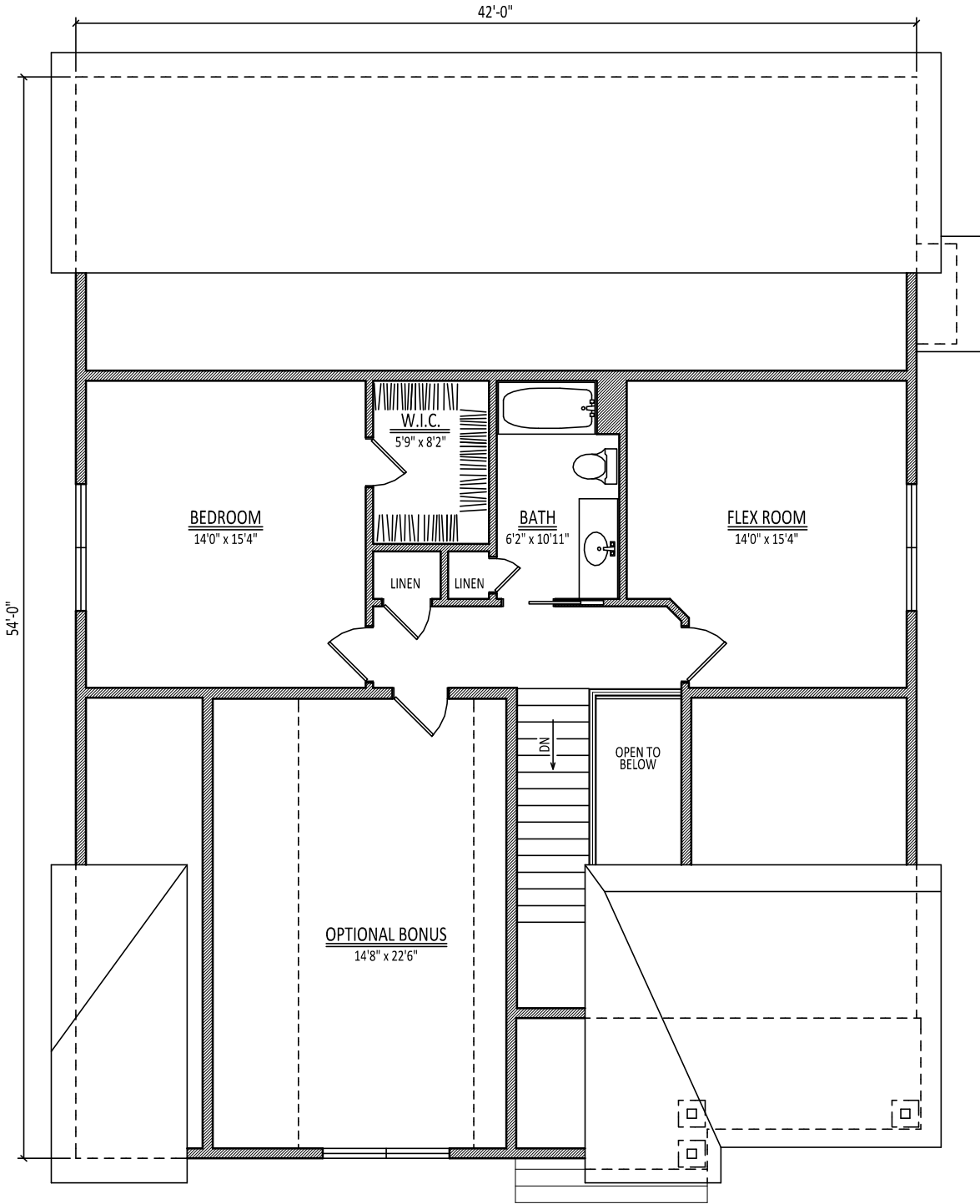
SQUARE FOOTAGE TABLE	
PLAN	SQ. FTG.
FIRST FLOOR	1,631
SECOND FLOOR	685
TOTAL:	2,316



FIRST FLOOR PLAN

THE WOODBURY

SQUARE FOOTAGE TABLE	
PLAN	SQ. FTG.
FIRST FLOOR	1,631
SECOND FLOOR	685
TOTAL:	2,316



SECOND FLOOR PLAN

THE WOODBURY